



台北圓山飯店 (THE GRAND HOTEL)

「國際蘭馨交流協會中華民國總會」(台灣專區)
會址：台中市台中港路二段9之7號8樓之3

Soroptimist International of Taiwan Region

Address : 8F.-3, No.9-7, Sec. 2, Taichung Port Rd., Taichung City 40758 ,Taiwan (R.O.C.)

TEL : 886-4-23271032 FAX : 886-4- 23260030

Email: sitaiwan@seed.net.tw Web: <http://www.siat.idv.tw>

Emergency Phone Number : 0987446401

Soroptimist International of the Americas 40th Biennial Convention

2008年國際蘭馨交流協會美洲聯盟
第40屆美洲雙年會



July 16-19, 2008

Taipei International Convention Center

台北國際會議中心

Taipei, Taiwan



國際蘭馨交流協會中華民國總會(台灣專區)
Soroptimist International of Taiwan Region

Soroptimist International (S.I.)

President Margaret Lobo (2007-2009)



As International President, I am privileged to represent an organization that has been committed to advancing the status of women and human rights for all for over 85 years.

身為 S. I. 的總監，我對於能代表 S. I. 這個致力於提高婦女地位和人權超過85年的組織，深以為榮。

Soroptimist International of the Americas (S.I.A.)

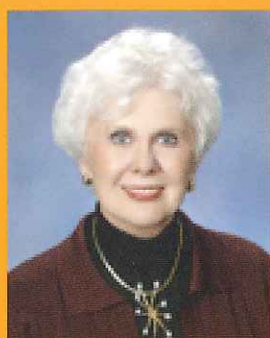
President Machiko Yamada (2007-2008)

Thank you for the privilege of serving as your president this past year. All of you truly represent the "best for women." Working together, I know the future is one where women and girls everywhere are truly living their dreams.

感謝大家在過去一年中授予本人擔任總監這項殊榮。各位真的做到“為婦女提供最佳服務”的角色。透過大家共同努力，我知道未來將有一片樂土，讓所有婦女和女孩，都能真實地活出她們的夢想！



S.I.A.
Past President
(2006-2007)
Tes B. Choa



S.I.A.
President-elect
(2008-2009)
Alice Wells



S.I.A.
Secretary
Treasurer
Sharon Fisher



S.I.A.
Executive
Director
Leigh Wintz

目錄 Contents

壹、中華民國簡介 Introduction to the Republic of China 02

貳、國際蘭馨交流協會中華民國總會(台灣專區)簡介

A Brief Introduction to the SIA Taiwan Region 06

一、簡史 Concise History 06

二、台灣專區分佈圖 The Allocation of 21 Clubs in Taiwan .. 10

三、歷任總監簡介

Introduction to the Governors from Taiwan Region..... 12

叁、首都台北市簡介 Introduction to the Capital City - Taipei · 13

一、故宮博物院 National Palace Museum..... 14

二、台北101大樓 Taipei 101 Tower 15

三、中正紀念堂 Chiang Kai-Shek Memorial Hall 16

四、總統府 Presidential Office Building 17

五、陽明山國家公園 Yangmingshan National Park 18

六、國父紀念館 Dr.Sun Yat-sen Memorial Hall 19

七、圓山忠烈祠 Martyrs' Shrine 20

八、士林夜市 ShihLin Night Market 21

九、華西街夜市 HuaXi Street Night Market..... 21

附錄一：會場周邊地區交通圖

Appendix 1: Site (T.I.C.C.) Peripheral Traffic Map..... 22

附錄二：會場周邊餐飲資訊

Appendix 2: Site (T.I.C.C.) Peripheral Restaurant Information· 24

附錄三：台北市藝文資訊

Appendix 3: Culture Events of Taipei City..... 32

壹、中華民國簡介(Introduction to the Republic of China)：

面積 Area	人口 Population	首都 Capital	總統 President	平均每人GNP GNP per capital
36,000km ² (14,400 square miles)	約2,300萬人 23 million	台北市 Taipei City	馬英九 Ma Ying-jeou	17,252美元(2007年) 17,252USD

中華民國創建於西元1912年，是亞洲第一個民主共和國。1949年中華民國政府播遷來台，轄有台灣、澎湖、金門、馬祖、東沙群島、中沙群島、南沙群島等地。

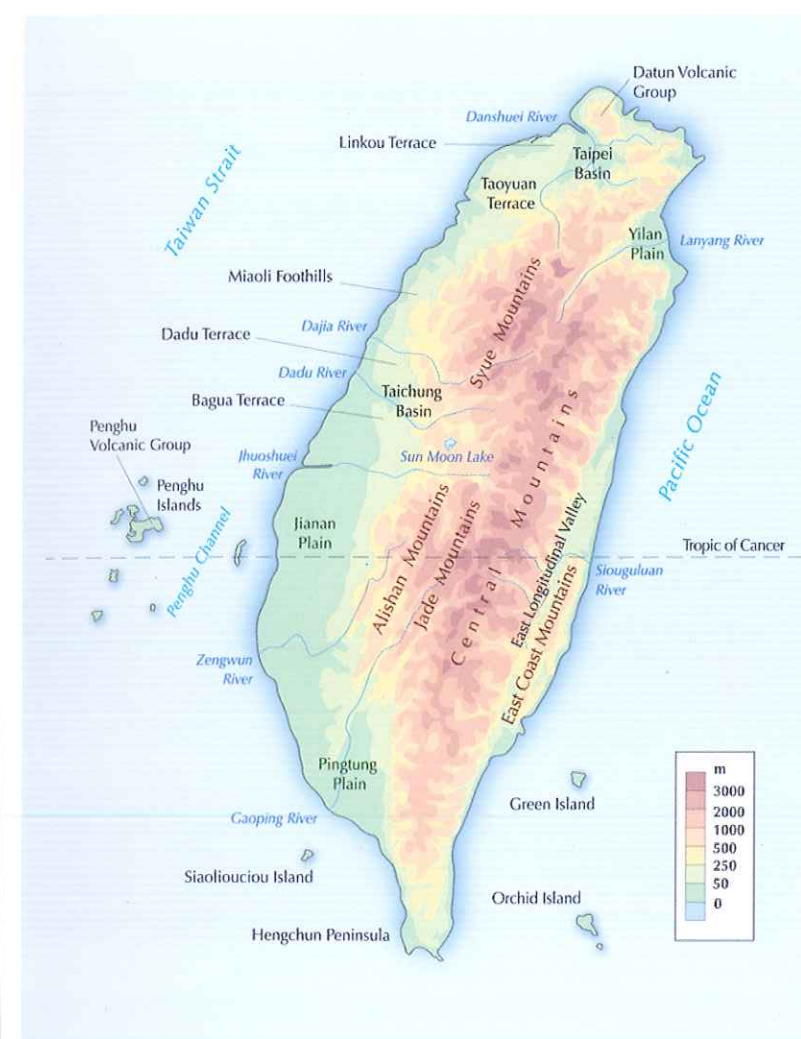
The Republic of China (R.O.C.), founded in 1912, was the first democratic republic in Asia. In 1949, the ROC government relocated to Taiwan, and held jurisdiction over Taiwan, Penghu, Kinmen, Matsu, the Dongsha Islands, Jhongsha Islands, and Nansha Islands.

台灣為南北狹長型的海島，位於亞洲大陸東南方、太平洋西岸東亞島弧間，北臨日本、琉球群島，南接菲律賓群島，面積約有3.6萬平方公里(14,400平方英里)，人口約2,300萬人。

Taiwan is shaped like a tobacco leaf that is narrow at the north and south ends. It lies off the southeastern coast of mainland Asia, across the Taiwan Straits from Mainland China-- a solitary island on the western edge of the Pacific Ocean. To its north lies Japan and Okinawa; to the south is the Philippines. It has a total land area of approximately 36,000 square kilometers (14,000 square miles) and a population of about 23 million.



▲ 中華民國位置圖
Location Map of the Republic of China



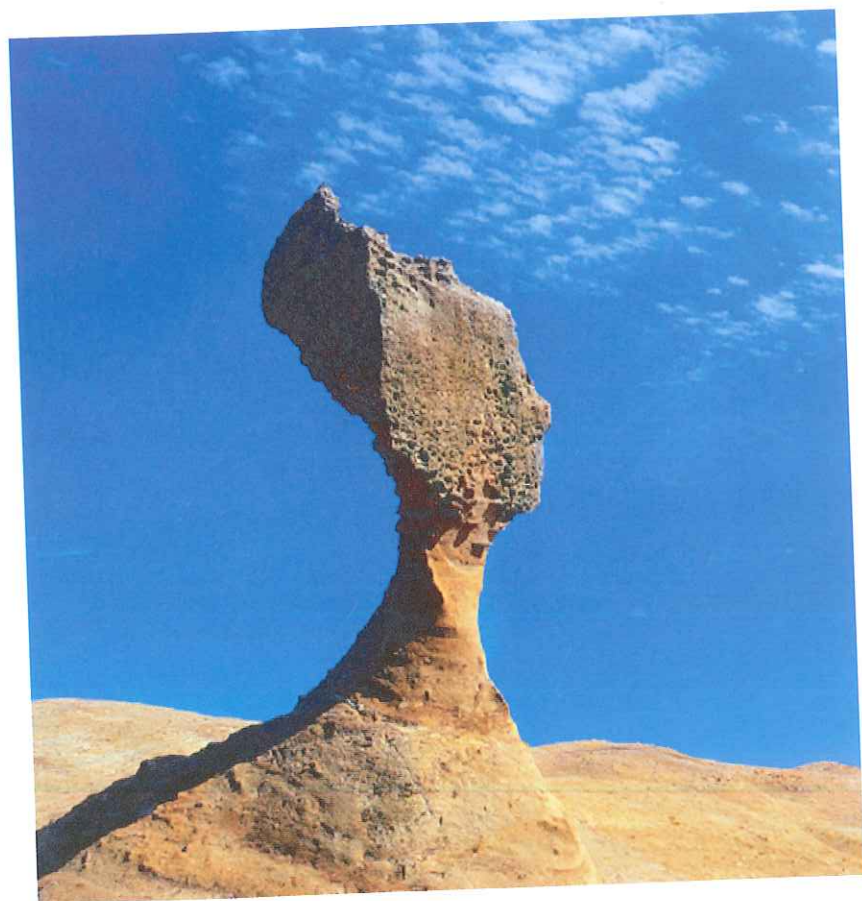
複雜多變的地形地貌，高山、丘陵、平原、盆地、島嶼、縱谷與海岸等景觀豐富；北迴歸線從中通過，使台灣同時擁有熱帶、亞熱帶、溫帶等各種自然生態。

The complex geological environment consists of various types of landscapes, including steep mountains, hills, plains, basins, islets, rift valleys, and coastlines. The Tropic of Cancer passes through the center of Taiwan, making its natural ecology to be a combination of tropical, subtropical and temperate zones.

◀ 中華民國地形圖
Geological Map of the Republic of China

台灣隔著海峽與中國大陸相望，幾百年來一直居於國際海運及貿易的樞紐地位。昔日，台灣對外貿易主要以糖和茶等農產品為主；如今，台灣在長期的努力下，不但創造了舉世聞名的經濟奇蹟，更成為世界第16大貿易國。尤其在是資訊產業快速發展，讓台灣躍升為世界第三大資訊硬體生產國，成為不折不扣的「科技島」。

Taiwan overlooks the Mainland China across the strait. Over the past centuries, it had been the center for international shipping and trades. Back then, Taiwan's exports relied mainly on agricultural products such as sugar and tea; now, after years of earnest work, Taiwan not only created the world-famous economic miracle, it also became the top 16 trading nations in the world. Its rapid developments in information industries made Taiwan the third largest information hardware manufacturer. It is without a doubt the "island of technology."



台灣在2002年已正式成為世界貿易組織（WTO）的會員國，這也使得台灣與全球的貿易體系更緊密的結合。在國際化與全球化的趨勢中，台灣正努力轉型，除了改善與中國大陸的關係之外，台灣也積極改善投資環境，以吸引更多的外資來台投資。

◀台北縣野柳女王頭礁石
Taipei County Ye Liou Queen's Head

台澎湖群島玄武岩自然保留區
Penghu Islets Basalt Natural Reserve
▼

Taiwan officially became a member of the World Trade Organization (WTO) in 2002. As a result, Taiwan's ties with the global trading system were strengthened. Under internationalization and globalization trends, Taiwan underwent active transformation. Other than improving the Taiwan-China relations, Taiwan has also actively engaged in improving its investment environment to attract more foreign investors to invest in Taiwan.



玉山群峰兀力，渾然天成，氣勢磅礴，雄偉壯麗秀麗雅緻，主峰標高3952公尺，為東北亞第一高峰。
The highest peak is Jade Mountain at 3,952 meters tall, which is also the highest mountain in East Asia.



根據美國商業環境風險評估公司（Business Environment Risk Intelligence；簡稱BERI）2008年第一次調查報告指出，台灣擁有世界排名第六的優質投資環境，尤其在兩岸關係改善，政治風險大幅降低之下，預期台灣將會吸引更多的國際資金注入，未來的發展令人期待！



According to the first investigation report conducted by Business Environment Risk Intelligence (abbreviated as BERI) in 2008, Taiwan's investment environment ranks 6th in the world. It is particularly true with lessened cross-strait tension and greatly reduced political risks; Taiwan is expected to attract more international funds. Its future developments are much anticipated.

◀南投縣溪頭大學池
The Famous Pool in Shitou Forest Recreation Area, Nantou Country

貳、國際蘭馨交流協會中華民國總會(台灣專區)簡介 (A Brief Introduction to SIA Taiwan Region) :

一、簡史 (Concise History) :

本會於1991年由日本南區總會輔導，凌渝英、蔡鈴蘭及張陳豔麗分別在台北、台中、高雄成立三個分會。1995年有7個分會，匯集於高雄市，由當時 SIA會長和執行長，指派蔡鈴蘭為第一任總監 (Governor)，並准予設置台灣專區 (Soroptimist International of Taiwan Region)，直接隸屬美洲聯盟 (Soroptimist International of the Americas，簡稱SIA)。1996年召開大會，向內政部申請成立「國際蘭馨交流協會中華民國總會」，並陸續於各地區成立分會。

In 1991, Japan Minami Region has assisted Ms. Sophia Ling, Ms. Ling-Lang Tsai and Ms. Chang Chen Yen Li to charter three clubs in Taiwan. They are Taipei Club, Taiwan Province Club and Kaohsiung Club. Since 1995, The Soroptimist International of the Americas (SIA) has approved the establishment of Soroptimist International of Taiwan Region. The charter governor is Ling-Lang Tsai. In 1996, the first region convention was held in Taipei. It's fast growth and development has been carried on since then.



國際蘭馨姐妹們於2006遠征美國費城。
These girls make Taiwan more beautiful and international.



蔡創會總監鈴蘭、潘立委維剛總監陪同SI世界會長Lynn夫婦拜訪立法院王金平院長。

SI President Lynn Dunning, Tina Pan and Ling-Lang Tsai visiting Legislative Yuan in Taipei, May 2006.



巾幗英雄，傲視群倫，蜚聲國際，載譽歸國。
Lion dance is really wonderful. Say Yes to Taiwan Region. (2006 in Philadelphia, U.S.A.)

創會總監為蔡鈴蘭女士 (圖左)，歷任總監為穆閩珠、黃昭順、傅美智、陳辜美貴、蕭惠瑩、許新凰、林玉雀、潘維剛、陳一華，現任總監施淑美女士，2009至2010年候任總監為陳賴美鈴女士 (詳下文「歷任總監簡介」)。



The following governors are Ming-Chu Mu, Chao-Shun Huang, Mei-Chih Fu, Mei-Kuei, Chen Ku, Hui-Ying Hsiao, Sing-Hwang Hsu, Yu-Chueh Lin, Tina Wei-Kang Pan. The past governor is I-Hwa Chen. The current governor is Shu-mei Shih, and the governor-elect is Mei-Ling Chen Lai.





其中蔡創會總監鈴蘭為2000-2001年美洲聯盟理事，陳辜前總監美貴為2004-2006年美洲聯盟理事，穆前總監閩珠為2008-2010年美洲聯盟理事。

Ling-Lang Tsai was the 2000-2001 SIA board of director, and Mei-Kuei Chen Ku was the 2004-2006 SIA board of director. Ming-Chu Mu is the 2008-2010 SIA board director.

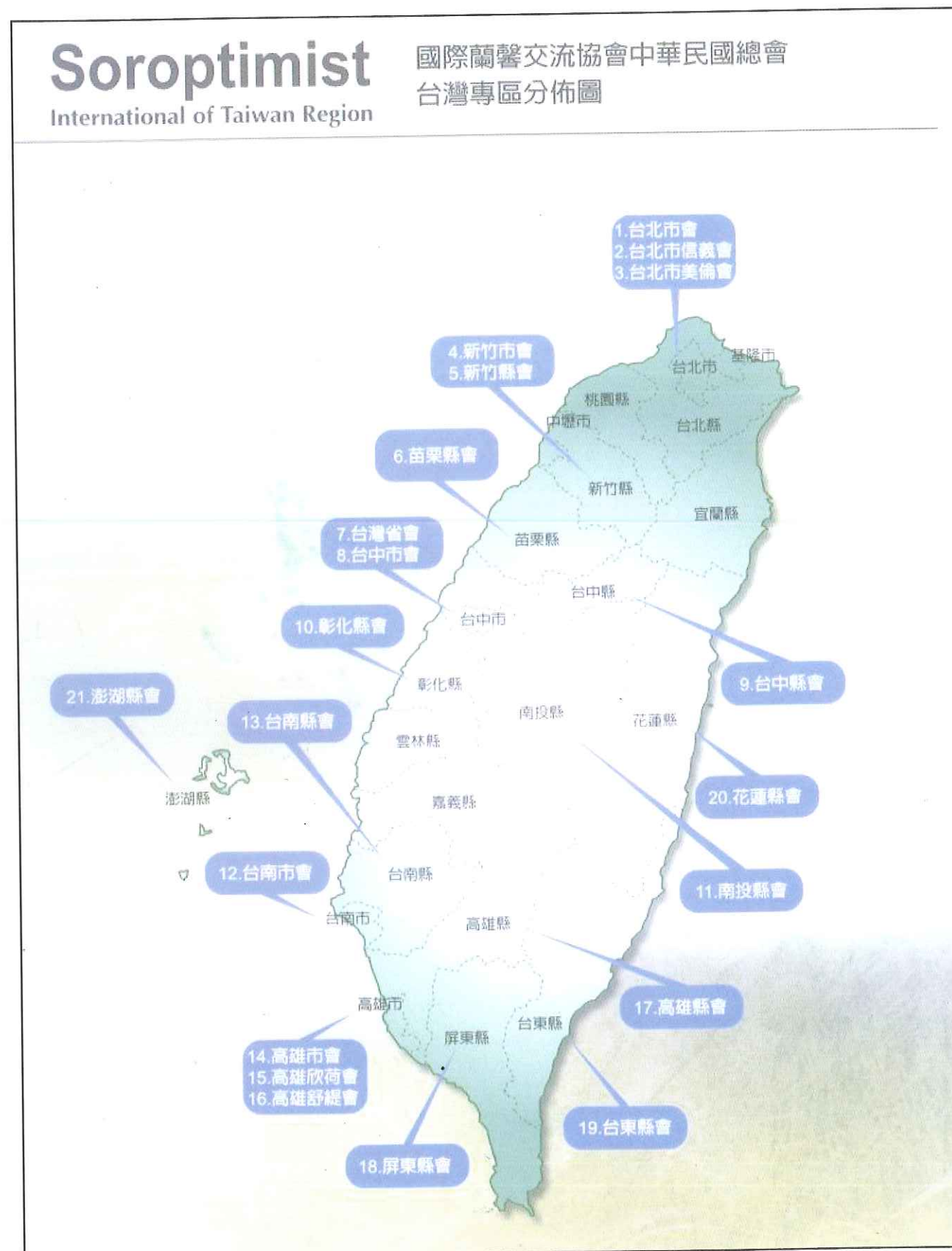


台灣專區成立以來，發展非常迅速，至今已有21個分會，會員人數也達 947人，遍佈全國各地。目前，台灣專區購置自有辦公室並聘雇專職秘書人員。

Taiwan Region now has a total of 21 clubs around the island. Club members are over 947. In addition, the region has it own office located in Taichung City, central Taiwan, and employs a full-time secretary.



二、台灣專區分會分布圖 (The Allocation of 21 Clubs) :



No.	分會名稱	Club Name	2007-2008 會長	2008-2009 會長
1	台北市會	SI of Taipei Club	譚雅文	吳楊愛珠
2	台北市信義會	SI of Taipei Hsin-Yi Club	吳俊妹	吳俊妹
2	台北市美倫會	SI of Taipei Beacon Club	張毓欣	張毓欣
4	新竹市會	SI of Hsin-Chu Club	簡彩光	簡彩光
5	新竹縣會	SI of Hsin-Chu Hsien Club	莊寶蓮	鍾千惠
6	苗栗縣會	SI of Miaoli Club	蔡麗卿	蔡美珠
7	台灣省會	SI of Taiwan Province Club	蔡珠美/陳秀如	陳秀如
8	台中市會	SI of Taichung Club	陳素楨	廖婉如
9	台中縣會	SI of Taichung Hsien Club	宋陳秀香	張淑珠
10	彰化縣會	SI of Chang-Hwa Hsien Club	陳玉書	陳玉書
11	南投縣會	SI of Nantou Club	林碧樓	林碧樓
12	台南市會	SI of Tainan Club	許黃彩好	蔡璧朱
13	台南縣會	SI of Tainan Hsien Club	張美蓮	張美蓮
14	高雄市會	SI of Kaohsiung Club	邱秀竹	黃馨柔
15	高雄市欣荷會	SI of Kaohsiung Shin-Ho Club	呂麗鳳	廖思怡
16	高雄市舒緹會	SI of Kaohsiung Suti Club	陳靜	陳靜
17	高雄縣會	SI of Kaohsiung County Club	陳曾四欣	陳曾四欣
18	屏東縣會	SI of Ping-Tung Club	簡金們	陳素娥
19	台東縣會	SI of Taitung Hsien Club	林秀霞	楊珍琪
20	花蓮縣會	SI of Hualien Hsien Club	許月燕	許月燕
21	澎湖縣會	SI of Peng Hu Hsien Club	洪媛慧	吳淑清



三、歷任總監簡介

(An Introduction to the Governors from Taiwan Region) :



蔡鈴蘭 (1995-1998)
Board of Director 2000-2001
LING-LANG TSAI



穆閩珠 (1998-2000)
Board of Director 2008-2010
MING-CHU MU



黃昭順 (2000-2001)
CHAO-SHUN HUANG



傅美智 (2001-2002)
MEI-CHIH FU



林玉雀 (2005-2006)
YU-CHUEH LIN



許新凰 (2004-2005)
SING-HWANG HSU



蕭惠瑩 (2003-2004)
HUI-YING HSIAO



陳辜美貴 (2002-2003)
Board of Director 2004-2006
MEI-KUEI, CHEN KU



潘維剛 (2006-2007)
WEI-KANG PAN



陳一華 (2007-2008)
I-HWA CHEN



施淑美 (2008-2009)
SHU-MEI SHIH



陳賴美鈴 (2009-2010)
MEI-LING CHEN LAI

參、首都台北市簡介

(Introduction to the Capital City - Taipei) :



台北市位於台灣本島北部，是中華民國的首都，人口數約263萬人，面積約272平方公里，現任市長為郝龍斌先生。市內交通便利，有多條捷運連結周邊衛星都市，亦有多條快速道路與高速公路穿梭其間。

◀ 台北市旅遊景點艋舺龍山寺
Taipei's tourist attractions - Longshan Temple

Taipei City is situated in the northern part of the Taiwan Island. It is the capital city of the Republic of China with a population of about 2,630,000 and an area of 272 square meters. Mr. Hau Lung-Bin is the current mayor. This city has convenient transportation that includes several MRT routes connecting the peripheral satellite cities. There are also many expressways and freeways in between.

台北市是台灣政治、商業、金融、時尚和文化中心，也是一個兼顧傳統與現代的綜合體，您可以在以下著名景點得到印證：

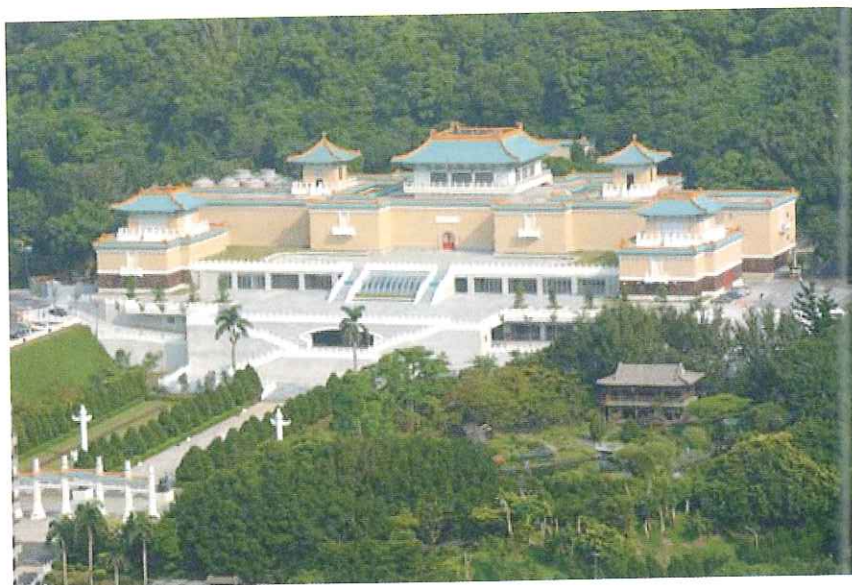
Taipei City is the center for politics, commerce, finance, fashion and culture in Taiwan. It is also a mixture of tradition and modernity as evidenced by the scenic spots below:



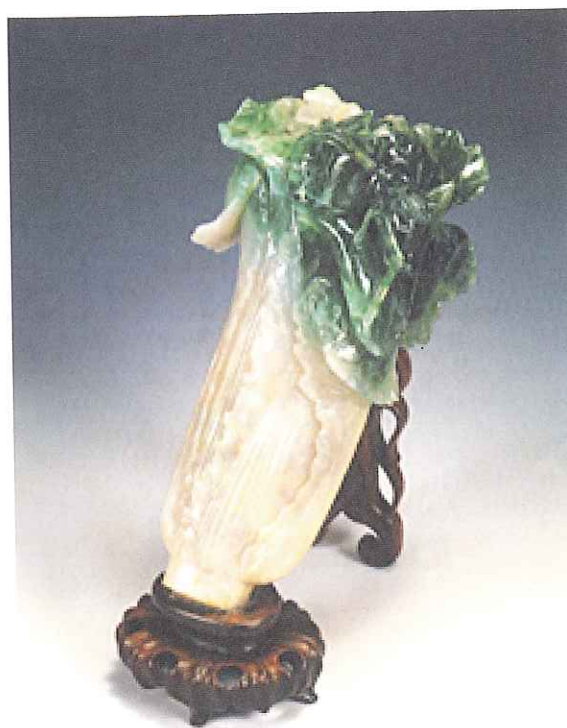
台北世界貿易中心 ▶
Taipei World Trade Center

一、故宮博物院 (National Palace Museum):

故宮收藏的文物珍寶囊括了整個中華文化五千餘年未曾中斷的歷史，在世界文明史上獨一無二，更是舉世聞名的文化資產，其收藏品多達65萬件以上，多數是昔日中國皇室的收集品。故宮代表華夏歷史的傳承，更是傳統文化與當代社會脈絡連結的新起點。



► 故宮博物院位於台北市士林區外雙溪，中國式的宮殿建築，在山林托襯下，有如山水畫，逸致非凡。 National Palace Museum is located in Waishuang Creek, ShihLin District, Taipei City. The Chinese palatial architecture amidst the mountains and the woods is like an extraordinary landscape painting.



▲ 「翠玉白菜」屬清代作品，是故宮的珍寶，與真實白菜十分相似。菜葉上停留的螽斯和蝗蟲，暗寓多子多孫之意。
Jadeite Cabbage is a rare treasure from Qing Dynasty kept at National Palace Museum. It resembles a real cabbage. Rendered at the top are a locust and a katydid, which are auspicious symbols for having many children and grandchildren.

The collection of historical relics and rare treasures exhibited at National Palace Museum are 5,000 years of uninterrupted Chinese history. They are unique in the history of world civilization and are a world-famous cultural heritage. Most of its 650,000-plus collections were heirlooms of the Chinese imperial families. National Palace Museum represents the passing down of cultures and the starting point of the integration of traditional cultures and the modern social structures.

二、台北101大樓 (Taipei 101 Tower):



▲ 從台北101大樓的89樓觀景台可鳥瞰全台北市，圖為台北101大樓的夜景。
The observatory on the 89th floor of Taipei 101 Tower overlooks the entire Taipei City. Photo: night view of Taipei 101 Tower.

台北101大樓位於台北市最繁華的信義區，以高科技巨型結構 (Mega Structure) 確保防災防風的顯著效益，總高508公尺，目前為世界第一高樓，也是新潮時尚的購物中心。欲參觀觀景台的遊客，可以在5樓櫃檯購票後，再搭乘金氏世界紀錄最快速的恆壓電梯，直達89樓觀景台。

Taipei 101 tower is located in the most bustling area in Taipei City, the Xinyi District. Its mega structure plays an essential role in keeping the building intact during natural disaster or strong winds. It is 508 meters in height and is currently the tallest building in the world. It is also the shopping center of style and fashion. Visitors who wish to visit the observatory may purchase tickets at the counter on the 5th floor and take the elevator at constant pressure to the observatory on the 89th floor. The elevator is the fastest in the world in the Guinness Book of Records

三、中正紀念堂 (Chiang Kai-Shek Memorial Hall) :

中正紀念堂原為紀念先總統 蔣中正先生而興建，現改名為台灣民主紀念館。佔地25萬平方公尺，建築主體面積15,600平方公尺，堂高70公尺，堂體外觀覆以雪白色大理石，八角形的塔頂綴以寶藍琉璃瓦，堂前朱紅的如意花壇，三色象徵著自由、平等、博愛的神聖精神，兩側分別為廡殿頂的國家戲劇院與歇山頂的國家音樂廳，同為金黃色調，營造出古意氛圍。

Chiang Kai-Shek Memorial Hall was a monument erected in memory of Chiang Kai-Shek, former President of the Republic of China. A new name for the structure, National Taiwan Democracy Memorial Hall was unilaterally announced. It occupies an area of 250,000 square meters. The main premise is 15,600 square meters in area and 70 meters in height. The external part of the monument is covered in white marble stones and the octagonal top is decorated with royal blue roofing tiles. The tri-colored Ru-yi flower displayed before the architecture symbolizes freedom, equality, and universal love. National Theater and National Concert Hall on the two sides of the monument are both golden yellow and classical in style.



► 中正紀念堂整體建築寓含中國「天人合一」思想。

The entire architectural design of Chiang Kai-Shek Memorial Hall implies the traditional Chinese thinking that man is an integral part of heaven.



四、總統府 (Presidential Office Building) :

中華民國總統府於西元1919年建造完成，前身為日據時代的台灣總督府。1945年第二次世界大戰期間，曾經遭戰機炸毀80%，戰後1948年修復完成。這棟屬於歐洲文藝復興時期「巴洛克」式的建築，正面寬約140公尺，側寬約85公尺，其排列特殊、紅白對稱，充滿典雅莊嚴的氣勢。

The Presidential Office building was inaugurated in 1919. It was the site of the former governor's office during the Japanese Colonial Period. During the Second World War in 1945, 80% of it was destroyed in an air raid. Post-war restoration was undertaken in 1948. This "baroque style" (of the Renaissance Period in Europe) architecture measures about 140 meters in length, and is about 85 meters in width. Its special array of red and white symmetry produces a majestic appearance.



▲ 中華民國總統府莊嚴肅穆。 The solemn Presidential Office Building

五、陽明山國家公園 (Yangmingshan National Park) :

陽明山國家公園位處台北盆地北緣，於1985年設立，面積約11,455公頃，海拔高度自200公尺至1,120公尺。

Yangmingshan National Park is located on the northern border of the Taipei basin. Established in 1985, it occupies an area of 11,455 hectares. It is 200 meters to 1,120 meters above sea level.

以大屯火山群為主體的陽明山國家公園，地質構造多屬安山岩，區域內噴氣孔與溫泉遍佈，多處溫泉區遠近馳名，成為觀光客熱愛的景點。

Yangmingshan National Park consists of Datun volcano groups. Its geological makeup mainly includes Andesite. Blowholes and hot springs are scattered around the area. There are many famous hot spring areas that are now favorite tourist spots.



◀陽明山國家公園素有「台北後花園」之稱，圖為園內擎天崗放牧之台灣水牛。
Yangmingshan National Park is otherwise known as the Taipei Backyard. In the picture is the Taiwanese buffalo herded in Ching Tian Gong.

六、國父紀念館 (Dr. Sun Yat-sen Memorial Hall) :

國父紀念館為紀念中華民國國父 孫中山先生而建。巍峨莊嚴的建築本體，外觀典雅樸實，為一座仿唐式的宮殿建築。1972年完工開館之初，主要作為陳列國父革命蹟之用，並有部分展演活動；目前館內有多功能的社教文化中心，各項活動之策劃與推動，均以宏揚 中山先生「博愛」、「天下為公」、「人生以服務為目的」之崇高理想為努力方向。

Dr. Sun Yat-sen Memorial Hall was constructed to commemorate the Father of the Republic of China, Dr. Sun Yat-sen. The majestic and solemn architecture and the elegant and simple external appearance are a replica of palatial architectures of the Tang Dynasty. Completed in 1972, the planning and promotion of activities disseminate noble ideals of Dr. Sun Yat-sen, including "universal love", "the world belongs to the people", and "the purpose in life is to serve."



▲國父紀念館建築典雅壯麗。The elegant and majestic Dr. Sun Yat-sen Memorial Hall

七、圓山忠烈祠 (Martyrs' Shrine) :



▲ 圓山忠烈祠建築風格仿中國古代宮殿形式。
Martyrs' Shrine of Yuanshan in ancient Chinese palatial style.

忠烈祠大門前站崗的衛兵，訓練精實嚴謹，任憑遊客如何挑弄，也無法博其一笑。每日交接換哨儀式，常吸引眾多遊客駐足觀看拍照，蔚為特色。

The honor guards on sentry duty before the entrance of Martyrs' Shrine are properly trained. They will not smile no matter how hard the tourists tease them. The daily guard changing has become a specialty routine, and often attracts a large crowd of tourists to watch and take photos.



▲► 圓山忠烈祠三軍儀隊衛兵交接儀式。The army/navy/air force honor guard-changing of guards at Martyrs' Shrine in Yuanshan.

圓山忠烈祠，興建於1969年，建築型式仿故宮太和殿，雄偉壯麗，象徵忠貞愛國的烈士們成仁取義的大無畏精神。

Martyrs' Shrine was constructed in 1969. The architectural style is modeled after Tai He Dian of the Forbidden City. It is a grand and majestic architecture that symbolizes the patriotic martyrs' fearless spirit when they laid down their lives for their country.



八、士林夜市 (ShihLin Night Market) :

士林夜市為台北市規模最大的夜市，以各種傳統小吃聞名國內外。



Shilin Night Market is the largest night market in Taipei City. It is known both locally and internationally for its traditional Taiwanese delicacies.

◀ 士林夜市所含範圍極廣，週末假日時前往，更是人山人海，擠得水洩不通。
The Shilin Night Market occupies an extensive area. It is usually tightly packed with people on weekends and holidays.

九、華西街觀光夜市 (HuaXi Street Night Market) :

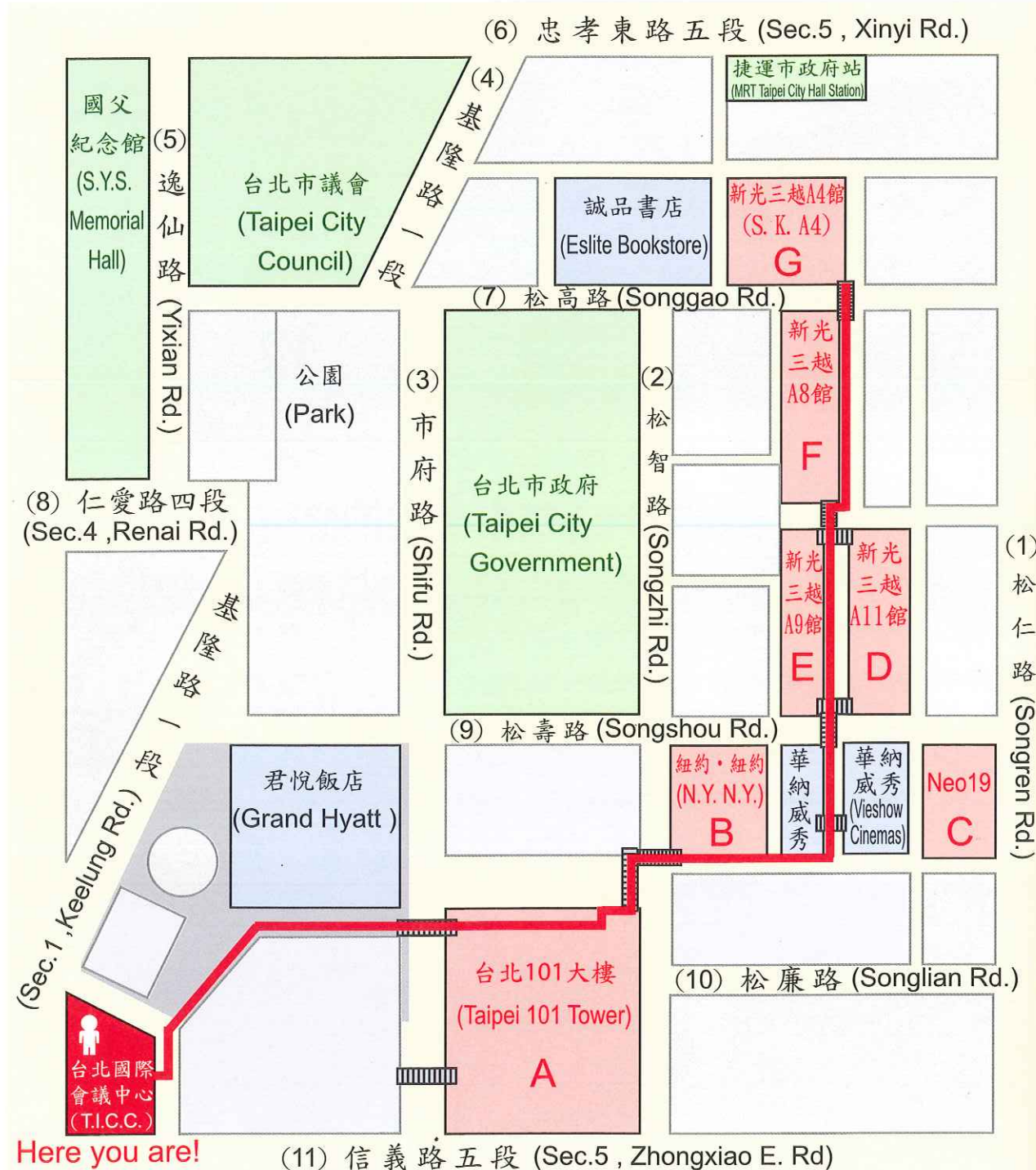
華西街觀光夜市位於龍山寺附近，經台北市政府整頓規劃，成為觀光夜市之後，煥然一新。入口處的傳統宮殿式牌樓，更添增幾分氣派。進入華西街夜市，映入眼簾的盡是海產、雞蛋蚵仔煎、赤肉羹、麻油雞、肉丸、炒螺肉、鱔魚麵、鼎邊銼等各式小吃，是國內外觀光客必定造訪之地。

HuaXi Street Night Market is located nearby Lung Shan Temple. After it became a night market under planning by the Taipei City Government, it took on a completely new outlook. The traditional palatial archway by the entrance enhanced its grandness. Upon entering HuaXi Street Night Market, seafood, oyster omelet, red meat broth, chicken broth, stir-fried spiral shell meat, eel noodles, and pot side scrapings soup come to view. It is a must-visit spot for local and foreign tourists.

► 圖為華西街夜市入口處牌樓。The picture shows the archway entrance of the HuaXi Street Night Market.



附錄一：會場周邊地區交通圖
(Transport Information of the T.I.C.C.) :



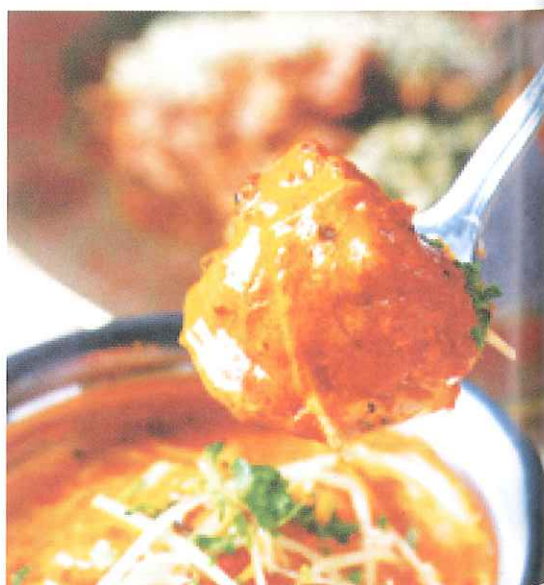
中文 Chinese	代碼 Code	英譯 English
台北國際會議中心		Taipei International Convention Center (T.I.C.C.)
台北101大樓	A	Taipei 101 Tower
紐約·紐約	B	New York New York department store & restaurant
Neo19	C	Neo19 restaurant
新光三越信義館 A11	D	Shin Kong Mitsukoshi A11 department store
新光三越信義館 A9	E	Shin Kong Mitsukoshi A9 department store
新光三越信義館 A8	F	Shin Kong Mitsukoshi A8 department store
新光三越信義館 A4	G	Shin Kong Mitsukoshi A4 department store
松仁路	(1) vertical street	Songren Rd.
松智路	(2) vertical street	Songzhi Rd.
市府路	(3) vertical street	Shifu Rd.
基隆路一段	(4) vertical street	Sec.1, Keelung Rd.
逸仙路	(5) vertical street	Yixian Rd.
忠孝東路五段	(6) horizontal street	Sec.5, Xinyi Rd.
松高路	(7) horizontal street	Songgao Rd.
仁愛路四段	(8) horizontal street	Sec.4, Renai Rd.
松壽路	(9) horizontal street	Songshou Rd.
松廉路	(10) horizontal street	Songlian Rd.
信義路五段	(11) horizontal street	Sec.5, Zhongxiao E. Rd.

附錄二：會場周邊餐飲資訊 (Restaurant Information of the T.I.C.C.) :

A、台北101大樓 (Taipei 101 Tower) :

台北市信義路五段七號 (No.7,Sec.5,Xinyi Rd.) , TEL : 8101-8898

1. 老家麵包吧Lugar Home Bread Bar -----B1F
2. 潛艇堡Subway (美式,Hamburger) -----B1F
3. 中島水產Nakajima Suisan (日式,Japanese Sushi) -----B1F
4. 雙樹拉麵Shuangshu (日式,Japanese Ra-men) -----B1F
5. 安南擔仔麵An Nan (台式,Taiwanese Noodle House) -----B1F
6. 郭老師養生藥膳Teacher Guo (中式藥膳,Chinese Herbal Pot) -----B1F
7. 興葉蚵仔煎 (台式,Taiwanese Oyster Omelet) -----B1F
8. 三巡海南雞飯 (星式,Singaporean Chicken Rice) -----B1F
9. 旭承港式料理 (港式,Hong Kong Food) -----B1F
10. 拿破利可麗餅 (法式,Crepe) -----B1F
11. 一碗拉麵 (日式,Japanese Ra-men) -----B1F
12. 歐姆列茲日式蛋包飯 (日式,Japanese Omelet Rice) -----B1F
13. 韓鶴亭 (韓式,Korean Food) -----B1F
14. 松芝岡 (日式,Japanese Food) -----B1F



鄉宴
御膳

四人份套餐



15. 基隆廟口百年吳家 (台式,Taiwanese KeeLung Food) -----B1F
16. 小南門傳統美食 (台式,Traditional Taiwanese Food) -----B1F
17. 印度皇宮 (印式,Indian Food) -----B1F
18. 泰越料理 (泰越式,Thai-Vietnamese Food) -----B1F
19. 貝諾義大利麵 (義式,Italian Pasta) -----B1F
20. 都拿其堡 (Hamburger) -----B1F
21. 美式燒烤 (美式,American Grill) -----B1F
22. 聖淘沙星國料理 (星式,Singaporean Food) -----B1F
23. 意廬法式烘培坊 (法式,French Bakery) -----B1F
24. 奧地利咖啡Amadeus (歐式咖啡座,Café) -----4F
25. 晶湯匙泰式料理Crystal Spoon (泰式,Thai Restaurant) -----4F
26. 代官山居食屋Dailanyama Dining (日式,Japanese Restaurant) -----4F
27. 隨意鳥地方DIMOND TONY'S ITALIAN RESTAURANT
(義式,Italian Restaurant) -----4F
28. 紅花鐵板燒Hung Hwa Teppanyaki (日式,Japanese Teppanyaki) -----4F
29. 華漾精品料理Hwa Young Boutique Cuisine (中式,Chinese Food) -----4F
30. 川滇食尚iR china (中式,Chinese Food) -----4F
31. 九如江浙美食Jiu Ru (中式,Chinese Food) -----4F
32. 美心Maxim's De Paris (法式,French Food) -----4F
33. 三燻本家Mihan 101 (日式,Japanese Restaurant) -----4F
34. 葉壹堂Page One (書店&咖啡,Book Store & Café) -----4F
35. 哇沙米Wasabi Buffet (日式,Japanese Buffet) -----4F

B、紐約・紐約 (New York New York Department Store) :

台北市松壽路12號 (No.12, Songshou Rd.) , TEL : 8780-8111

1. 知多家CHITAKA (日式炸豬排,Japanese Fried Pork) ----- B1F
2. 麵屋翔太SHOTA (日式拉麵,Japanese Ra-men) ----- B1F
3. 海老天KYOYAN (日式鰻魚飯,Japanese Eel Rice) ----- B1F
4. 牛仔牛排屋 (美式牛排,Steak House) ----- B1F
5. 桂客鐵板燒 (日式鐵板燒,Japanese Teppanyaki) ----- B1F
6. 韓鶴亭 (韓式,Korean Food) ----- B1F
7. 濠城石板料理 (台式,Taiwanese Food) ----- B1F
8. You&Me (咖啡甜點,Café) ----- B1F
9. 鬥牛士 (牛排,Steak House) ----- 6F
10. 紅磡 (港式飲茶,Hong Kong Dim-sum) ----- 6F
11. 花開了 (日式創意料理,Japanese Food) ----- 6F



C、Neo19 :

台北市松壽路22號 (No.22, Songshou Rd.) , TEL : 2345-8819

1. Romano's Macaroni Grill (義式、現場歌劇演唱,Italian Restaurant) ----1F
2. PERSON (簡餐,Western Style Light Meal) -----1F
3. 同壽司 (日式壽司,Japanese Sushi) -----1F
4. inhouse19 (西餐、酒吧,Restaurant & Bar) -----1F
5. 和民 (日式居酒屋,Japanese Restaurant) -----2F
6. Chili's (美式碳烤,Grill) -----2F
7. 麻布茶房 (日式輕食甜點,Japanese Light Meal) -----2F
8. 告羅士打 (港式,Dim-sum) -----2F
9. Mo-Mo-Paradise (日式壽喜燒、涮涮鍋,Japanese Sukiyaki & Shabu-Shabu) -2F
10. 上閣屋 (日本料理自助餐,Japanese Buffet) -----3F

D、新光三越信義館—A11館 (Shin Kong Mitsukoshi Department Store) —A
 台北市松壽路11號 (No.11, Songshou Rd.) , TEL : 8780—1000



1. 曼德拉餐廳 (南非式, South African Restaurant) -----4F
2. 欣葉日式料理自助餐 (日式自助餐, Japanese Buffet) -----5F
3. 油桐花客家手路菜 (台式, Taiwanese Food) -----B2F
4. 庄腳炒飯 (台式, Taiwanese Food) -----B2F
5. 青蔥牛肉麵 (中式, Chinese Beef Noodle) -----B2F
6. 乙味屋日式定食 (日式定食, Japanese Food) -----B2F
7. 朱記餡餅粥 (中式, Chinese Food) -----B2F
8. 洪芋頭擔仔麵 (台式, Taiwanese Noodle House) -----B2F
9. 度小月擔仔麵 (台式, Taiwanese Noodle House) -----B2F
10. 古早味米粉湯 (台式, Taiwanese Noodle House) -----B2F
11. 阿婆壽司 (台式, Taiwanese Sushi) -----B2F
12. 北投魷魚羹 (台式, Taiwanese Noodle House) -----B2F
13. 賽門甜不辣 (台式, Taiwanese tempura) -----B2F
14. 九如江浙美食 (中式, Chinese Food) -----B2F
15. 小南門傻瓜乾麵 (中式, Chinese Noodle) -----B2F
16. 駱姐正雞酒 (台式, Taiwanese Food) -----B2F
17. 紅花將軍鐵板燒 (日式鐵板燒, Japanese Teppanyaki) -----B2F
18. 名廚排骨 (台式, Taiwanese Food) -----B2F
19. 長壽韓國料理 (韓式, Korean Food) -----B2F
20. 安妮莎泰式廚房 (泰式, Thai Food) -----B2F



E、新光三越信義館—A9館 (Shin Kong Mitsukoshi Department Store) —A9
 台北市松壽路9號 (No.9, Songshou Rd.) , TEL : 8780—5959

1. 樹庭園空中花園餐廳 (下午茶、咖啡, Café) -----4F
2. 兩班家韓式烤肉 (韓式烤肉, Korean BBQ) -----6F
3. 京桃山 (日本京都料理, Japanese Restaurant) -----6F
4. 變臉新中經典風味菜 (中式, New Style Chinese Restaurant) -----6F
5. 勝博殿 (日式炸豬排, Japanese Fried Pork) -----6F
6. SHABU-SAN (日式火鍋, Japanese Hot Pot) -----6F
7. 瓦城泰國料理 (泰式, Thai Restaurant) -----7F
8. 紅豆食府 (中式、上海菜, Shang-Hai Style Chinese Restaurant) -----7F
9. PATIO帕堤歐 (義式料理, Italian Restaurant) -----7F
10. BANDO·8 (中式、晶華酒店經營, Chinese Restaurant) -----8F
11. 春水堂 (中式、茶點、飲料, Chinese Tea Room) -----B1F



F、新光三越信義館—A8館 (Shin Kong Mitsukoshi Department Store) —A8
 台北市松高路12號 (No.12, Songgao Rd.) , TEL : 8780—9966

- 1.巴黎國際百匯自助餐廳 (歐式自助餐, Buffet) -----6F
- 2.鳥樓茶餐廳 (港式飲茶, Hong Kong Dim-Sum) -----B1F
- 3.清真中國牛肉麵 (中式, Chinese Beef Noodle) -----B2F
- 4.金軒排骨 (台式, Taiwanese Food) -----B2F
- 5.基隆廟口百年吳家 (台式, Taiwanese KeeLung Food) -----B2F
- 6.寶記客家現炒料理 (台式, Taiwanese Food) -B2F
- 7.西貢粉味館 (越式, Vietnamese Food) -----B2F
- 8.原味太郎 (日式定食, Japanese Food) -----B2F
- 9.韓鶴亭 (韓式, Korean Food) -----B2F
- 10.壽賀喜屋 (日式, Japanese Ra-men) -----B2F
- 11.郭老師養生藥膳 Teacher Guo (中式藥膳, Chinese Herbal Pot) -----B2F
- 12.摩斯漢堡 MOS BURGER-----B2F
- 13.金輪擔仔麵 (台式, Traditional Taiwanese Noodle) -----B2F
- 14.阿官火鍋 (台式, Taiwanese Hot Pot) -----B2F
- 15.紅花將軍鐵板燒 (日式鐵板燒, Japanese Teppanyaki) -----B2F
- 16.韓里館 (韓式, Korean Food) -----B2F



G、新光三越信義館—A4館 (Shin Kong Mitsukoshi Department Store) —A4
 台北市松高路19號 (No.19, Songgao Rd.) , TEL : 8780—5599

- 1.滬園上海湯包館 Shanghai Dumpling -----6F
- 2.發現越Discovery Vietnamese Cuisine ----6F
- 3.微笑尼可加州捲NIKO NIKO ROLL&SUSHI
-----6F
- 4.隨意鳥地方DIMOND TONY'S ITALIAN
RESTAURANT -----6F
- 5.萬年排骨老店 (台式, Taiwanese Food)
-----B2F
- 6.印度皇宮 (印式, Indian Food) -----B2F
- 7.妻家房 (韓式, Korean Food) -----B2F
- 8.千勝屋 (日式定食, Japanese Food) ---B2F
- 9.味千拉麵 (日式, Japanese Ra-men) --B2F



附錄三：台北市藝文資訊 (Culture Express of Taipei City)：

一、故宮博物院 (National Palace Museum)

(一) 地址 (Address)：台北市至善路二段221號
(No. 221, Sec. 2, Zhishan Rd., Taipei City)

(二) 展期 (Dates)：2008/05/30 ~ 2008/08/17

(三) 展出項目 (Exhibitions)：印象畢沙羅：英國牛津大學美術館珍藏展

Camille Pissarro, Family and Friends:

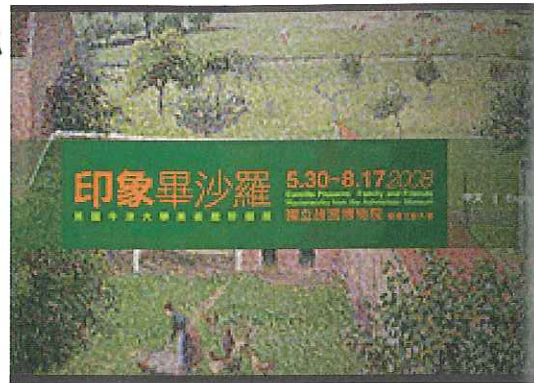
Masterworks from the Ashmolean Museum

(四) 開放時間 (Hours)：全年開放，上午九時至下午五時。

夜間開放時段：每週六下午五時至晚間八時三十分，夜間開放時段免費參觀。

Open daily from 9 AM to 5 PM every day of the year. Extended evening hours:

Every Saturday, 5:00 to 8:30 PM (during extended evening hours, free admission)



二、國立歷史博物館 (National Museum of History)

(一) 地址 (Address)：台北市南海路49號
(No. 49, Nanhai Rd., Taipei City)

(二) 展期 (Dates)：2008/05/31 ~ 2008/09/05

(三) 展出項目 (Exhibitions)：驚艷米勒—田園之美畫展

Millet and His Time: Masterpieces from the Muse d'Orsay

(四) 開放時間 (Hours)：

1. 每週一 (Mondays) 9:30—18:00。

2. 週二至週日 (Tuesday-Sunday) .

9:30—21:00。



三、國立台灣博物館 (National Taiwan Museum)

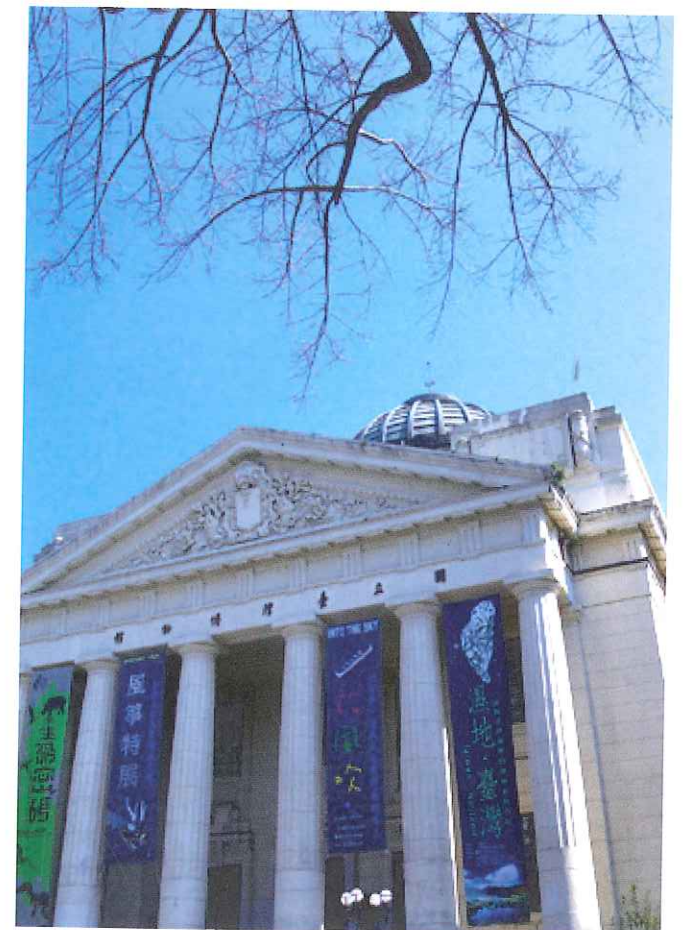
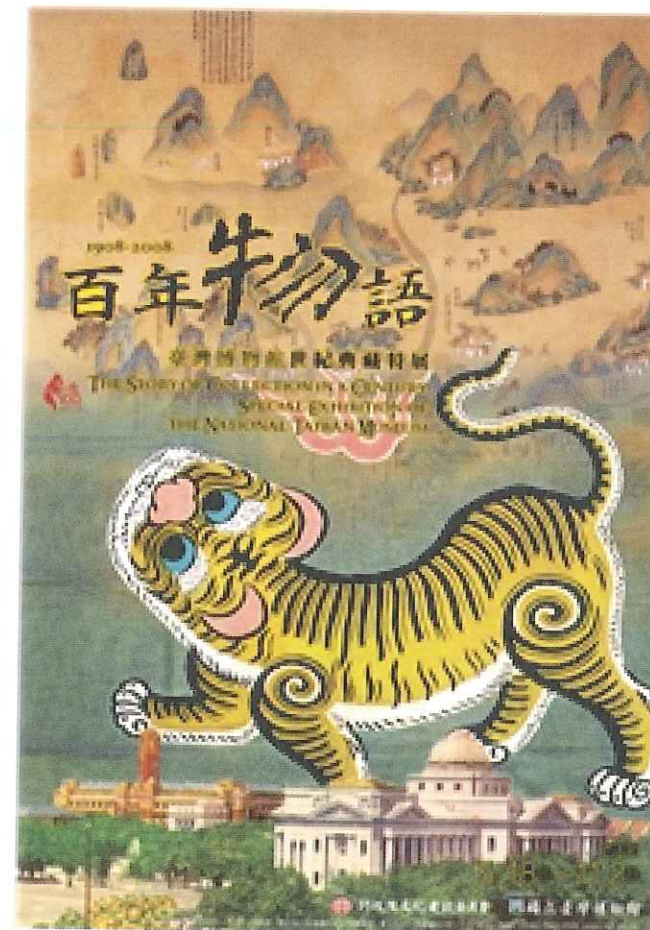
(一) 地址 (Address)：台北市襄陽路2號 (No. 2, Xiangyang Rd., Taipei City)

(二) 展期 (Dates)：2008/5/18~2008/11/2

(三) 展出項目 (Exhibitions)：百年物語—臺灣博物館世紀典藏特展

The Eloquent of National Taiwan Museum — A Centennial Splendor on its Architecture

(四) 開放時間 (Hours)：週二至週日 (Tuesday-Sunday) 10:00—17:00。



四、台北市立美術館 (Taipei Fine Arts Museum)

(一) 地址 (Address) : 台北市中山北路三段181號
(181, Sec. 3, Zhongshan N. Rd., Taipei City)

(二) 展期 (Dates) : 2008/6/14~2008/8/24

(三) 展出項目 (Exhibitions) :

建築實驗室—法國中央地區當代藝術基金會
建築收藏展 ARCHILAB. Collection du FRAC
Centre

(四) 開放時間 (Hours) :

1. 週二至週日 (Tuesday-Sunday) : 9:30—17:30。

2. 夜間開放時段：週六17:30至20:30免票參觀

Saturday Night from 17:30 to 20:30 Free admission.



五、中正紀念堂 (National Chiang Kai-shek Memorial Hall)

(一) 地址 (Address) : 台北市中山南路21號
(No. 21, Zhongshan S. Rd., Taipei City)

(二) 展期 (Dates) : 2008/07/11~2008/11/04

(三) 展出項目 (Exhibitions) : 沉睡18000年的冰原巨獸長毛象特展
Sleeping in the ice sheet Jushou 18,000 - Mammoth exhibition.

(四) 開放時間 (Hours) : 每日10:00—18:00。
Open daily from 10 AM to 6 PM every day of the year.



六、國立國父紀念館 (National Dr. Sun Yat-sen Memorial Hall)

(一) 地址 (Address) : 台北市仁愛路四段505號 (No.505, Sec.4, Ren-ai Rd., Taipei City)

(二) 展期 (Dates) : 2005/04/01~2010/12/30

(三) 展出項目 (Exhibitions) :

1. 中山先生與台灣展

(Dr. Sun Yat-sen and Taiwan)

2. 中山先生建立中華民國展

(Dr. Sun Yat-sen Founding
Republic of China Exhibition)

(四) 開放時間 (Hours) :

每日上午9:00至17:00。

Open daily from 9 AM to 5 PM every day of the year.



凌渝英 (Sophia, Ling Yu-in) 2007年布貼畫作品「最美麗的101大樓」。凌渝英為台北分會創會會長，布貼畫是利用不同色彩的碎步與舊衣等，作為材料創造出一幅幅生動活潑的畫作，不僅化腐朽為神奇，也深具資源回收的環保概念。

Sophia, Ling Yu-in's textile collage art in 2007, "The Most Beautiful Taipei 101 Tower." Sophia, Ling Yu-in is the founding president of S.I. Taipei club. Textile collage art is the creation of vivid artworks by using fragments of cloth and old fabric. It not only takes run-of-the-mill odds and ends and turns them into incredible art; its recyclable materials are also environmentally friendly.

發行人：蔡鈴蘭、施淑美

總編輯：穆閔珠、陳辜美貴

執行編輯：劉良驥

顧問：國際蘭馨交流協會中華民國總會、2008年SIA第40屆雙年會籌備執行委員會

企劃：楊資華

外文編譯：張毓倣、孫翼慈、張百君

美工設計：李紫玲